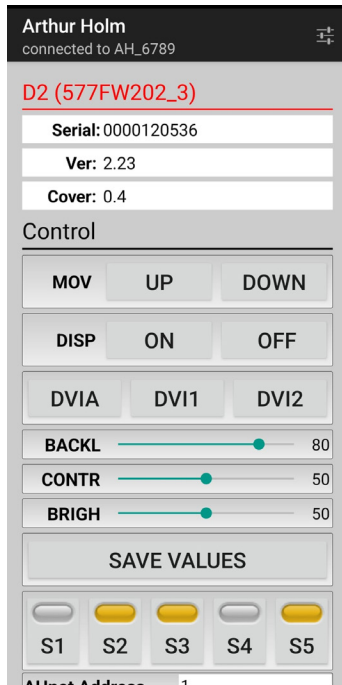
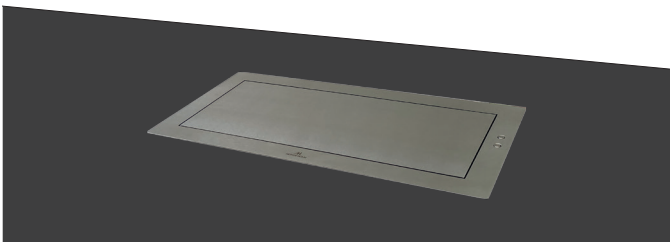
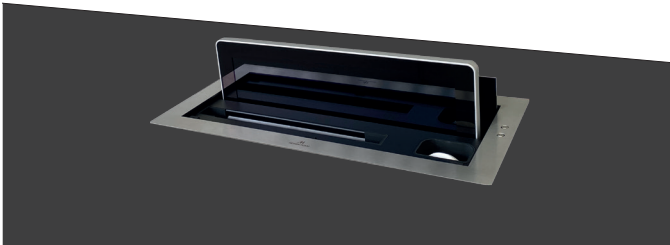




# ARTHUR HOLM DynamicX2KM

HDCP compliant aluminum retractable motorized monitor with an automated compartment for keyboard and mouse

AH17DX2KM



## Highlights

- Vertical motorized monitor with 20° of inclination
- Synchronized lift system to raise and retract a keyboard and mouse compartment
- Patented single engine mechanism for Up/Down and tilt movements
- Milled aluminum housing
- Front anti-reflective 2 sides coated 3 mm black edged glass
- Stainless steel cover plate
- Energy saving design, low consumption video controller
- 2/DVI inputs, HDCP compliant
- RS422/RS485 I/O
- ISD: Interactive Setup Display for adjustments and service
- AHlink: Wireless connectivity for setup, adjustments, and control
- AH-AMMC: Auto mechanical Movement Calibration



ARTHUR HOLM

Albiral Display Solutions SL · Fàtima, 25 Sant Hipòlit de Voltregà 08512 Barcelona, Spain · +34 938 502 376 · marketing@arthurholm.com · www.arthurholm.com  
Arthur Holm is a registered brand of Albiral Display Solutions SL. Specifications subject to change without previous notice.

Technology serving Design

## General

Arthur Holm DynamicX2KM is a motorized retractable monitor with an integrated lifting system for storing a standard wired or wireless keyboard and mouse. It is an HDCP compliant aluminum retractable monitor with a synchronized motorized keyboard and mouse compartment for an ideal and space optimized workstation. Easy to integrate, this compact solution allows the elevation and retraction of an elegant monitor together with a compartment that allows access to a keyboard and mouse. All can be hidden when not in use inside the furniture, allowing a neat desk free of any intrusive technology. The monitor, keyboard and mouse are hidden underneath a stainless steel cover plate that opens up and slides down inside the furniture, allowing the monitor to rise and to incline 20 degrees for a perfect viewing angle.

The movement is based on a patented mechanical system. The keyboard and mouse are raised simultaneously with the monitor to a position where the user can easily access and place them in a comfortable working position.

After use, the keyboard and mouse can be placed back in this compartment where they will disappear under the stainless steel cover plate together with the monitor, leaving the desk neat and free of any obtrusive device.

## Technical Specifications

### Display

Size	FULL HD 17.3" TFT Active Matrix, widescreen format. LED backlight
Resolution	1920 (h) x 1080 (v)
Brightness	400 cd/m2
Contrast ratio	600:1
Pixel	0.1989 (h) x 0.1989 (v) mm
Viewing angle	60° / 80° (u/d) / 80° / 80° (l/r)
Viewing area	381.888 (h) x 214.812 (v) mm
LED backlight lifespan	50,000 hrs
Response time	Tr 37 ms, Tf 3 ms
Temperature (operating/storage)	Operating 0°C ~ +40°C Storage -20°C ~ +60°C

### Materials

Monitor housing	Anodized Aluminum
Glass	AR 2-side with an anti-reflective coating on the glass surface. Thickness: 3.0 ± 0.3 mm
Cover plate	Stainless steel

### Connectivity

Input signal	DVI-I (1 input) – HDCP Compliant - Digital / Analog DVI-D (1 input) – HDCP Compliant - Digital
RJ45 CAT6 (with loop)	Addressable RS422 monitor control by AHnet protocol
GPI (SubD9)	Up/Down control
USB	For service

### Accessories

ERT	Ethernet Interface Unit
-----	-------------------------

### Control

RJ45, RS-422 (I/O), AHNet protocol
Addressing
Termination switch
GPI
IR Remote control (monitor adjustments)

### Movement's Control

User interface on monitor	(Up/Down) Buttons on cover plate
Remote	RS-422 I/O, GPI

### Electrical

External power supply	100-240 Vac, 47/63Hz, 12Vdc
Power consumption	50W

### Mechanical

Monitor Dimensions:	
Screen	538 x 304 x 25 mm [21.21" x 11.97" x 0.98"]
Upper cover plate	636 x 95 x 3 mm [25.03" x 3.73" x 0.12"]
Housing below the table	621 x 590 x 80 mm [24.45" x 23.23" x 3.15"]
Weight	21.2 Kg / 46.7 Lbs

### Automated Keyboard and Mouse compartment dimensions

Max. Keyboard dimensions	285 x 120 x 15 mm [11,22" x 4,72" x 0,52"]
Max. Mouse dimensions	120 x 65 x 40 mm [4,72" x 2,56" x 1,57"]

### Shipping Dimensions:

Weight	22.2 Kg / 48.9 Lbs
Shipping Box	715 x 165 x 705 mm [28.15" x 6.4" x 27.74"]

## ARTHUR HOLM

Albiral Display Solutions SL · Fàtima, 25 Sant Hipòlit de Voltregà 08512 Barcelona, Spain · +34 938 502 376 · marketing@arthurholm.com · www.arthurholm.com  
Arthur Holm is a registered brand of Albiral Display Solutions SL. Specifications subject to change without previous notice.

Technology serving Design

## Options and accessories

- 2/ HDMI INPUTS.
- DynamicLoop
- DynamicShare
- Built-in USB or HD-SDI camera (adjustable via AHlink)
- DynamicTalk
- Projected capacitive multi-touch screen
- Connectors on the cover plate

## Finishes

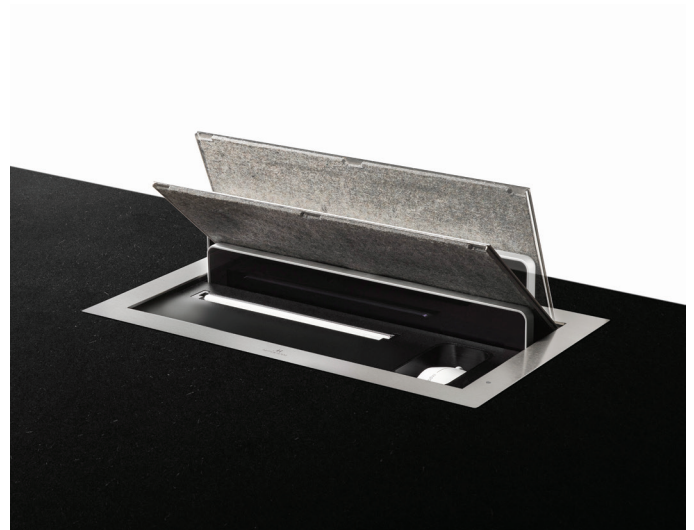
- Laser engraved logo
- UnderCover for veneer
- Matte cover plate
- Black anodized
- Gold
- Bronze
- Painted

## Certifications

- CE
- FCC
- IEC60950
- CB
- RoHS
- BIS

## Warranty

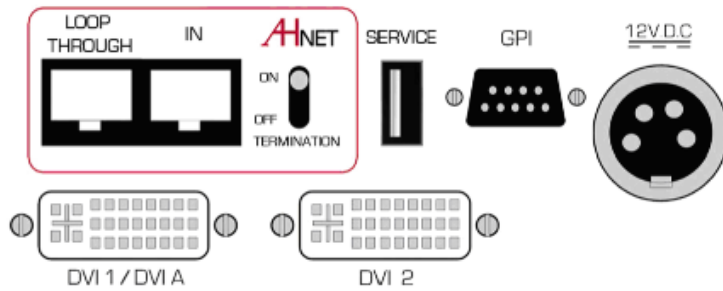
- 5 years for the mechanical parts



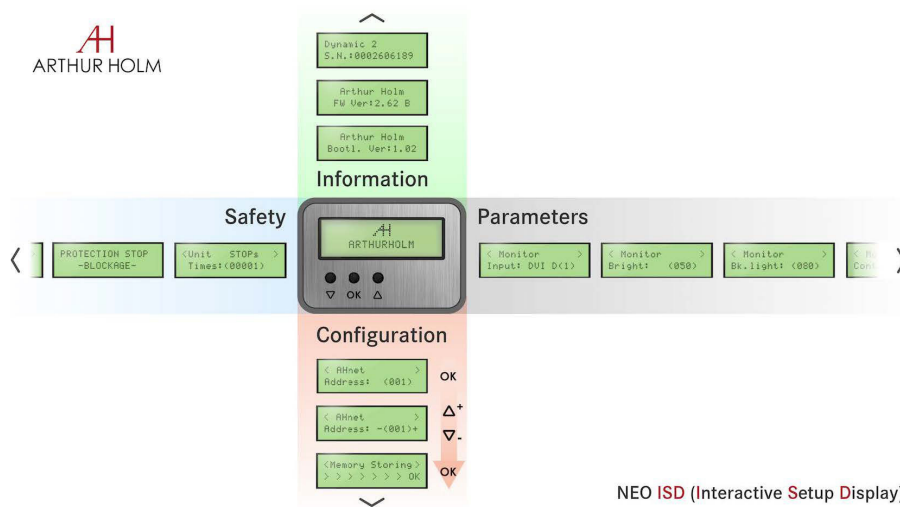
### ARTHUR HOLM

Albiral Display Solutions SL · Fàtima, 25 Sant Hipòlit de Voltregà 08512 Barcelona, Spain · +34 938 502 376 · marketing@arthurholm.com · www.arthurholm.com  
Arthur Holm is a registered brand of Albiral Display Solutions SL. Specifications subject to change without previous notice.

Technology serving Design



Interactive Setup Display (ISD)

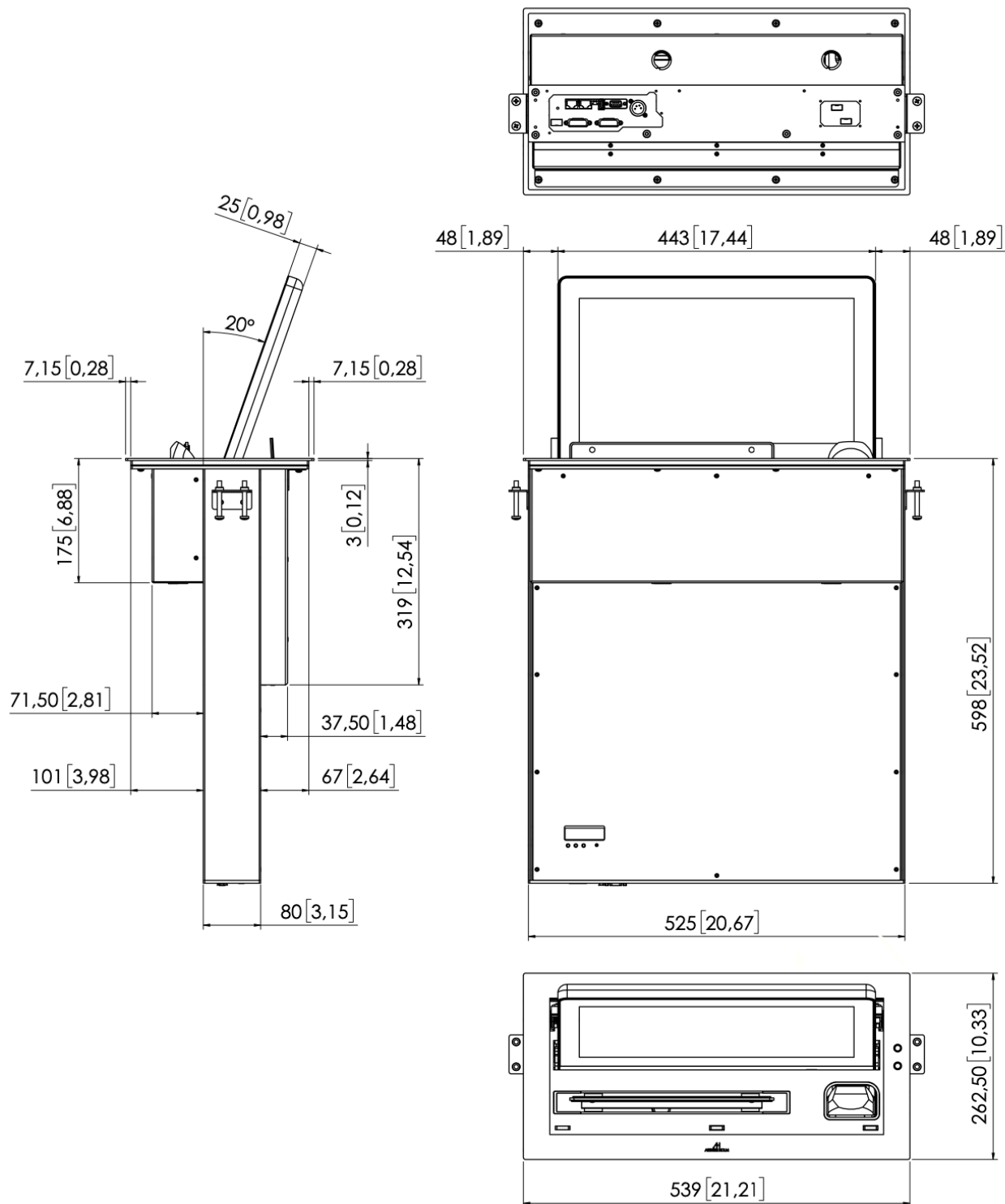


NEO ISD (Interactive Setup Display)

Consultants, architects and engineers specifications

Vertically retractable motorized 17,3" Full HD professional monitor. It shall include a lifting and retracting mechanism to allow the lifting and storage of wired or wireless keyboard and mouse. The cover plate shall be made of stainless steel and shall be actively activated by 2 push buttons or remotely. The cover plate shall slide down inside the furniture. The monitor housing shall be made of milled anodized aluminum and the screen shall be protected with anti-reflective 2 side coating black edged 3 mm glass. The monitor shall make the up/down and tilt movements with only one engine. The monitor shall have a brightness of the monitor shall have a brightness of 400 cd/m2, a contrast ratio of 600:1 and a backlight lifespan of 50,000 hours. The monitor shall provide 2 DVI HDCP inputs by a licensed HDCP monitor manufacturer.

The monitor shall provide an addressable RS-422 and an easy to read Interactive Setup Display (ISD) to access the safety parameters, the setup of the speeds and the control of the brightness, contrast and backlight. The monitor shall be able to run an autoadjustment program to reset the factory setups. The monitor shall provide a USB port for firmware upgrades. The monitor shall be controlled by a wireless Android and iOS app providing information about the monitor's serial number, and providing access to the control and to the setup menu.

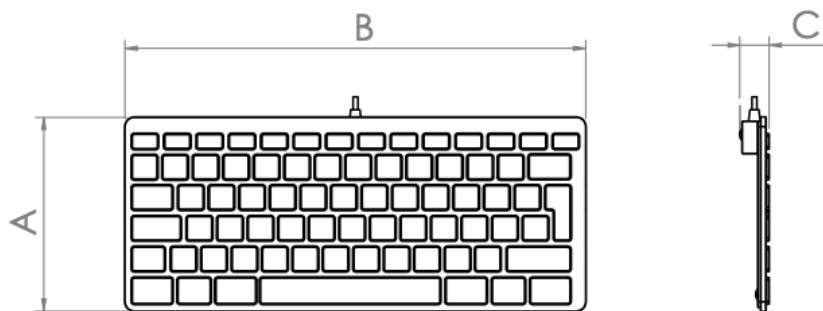


ARTHUR HOLM

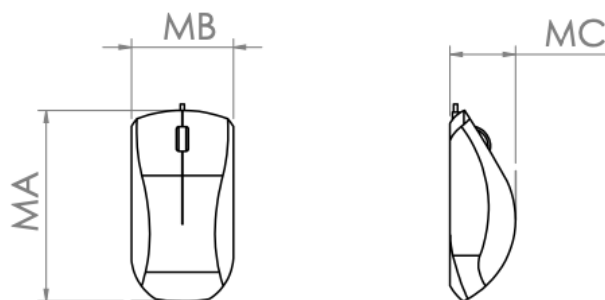
Albiral Display Solutions SL · Fàtima, 25 Sant Hipòlit de Voltregà 08512 Barcelona, Spain · +34 938 502 376 · marketing@arthurholm.com · www.arthurholm.com  
 Arthur Holm is a registered brand of Albiral Display Solutions SL. Specifications subject to change without previous notice.

Technology serving Design

DynamicX2KM is designed to be equipped with standard Arthur Holm Keyboard/Mouse. If another Keyboard/Mouse is required, this should comply with the specifications below. If so, can be adapted for the chosen Keyboard/Mouse,



Keyboard dimension.			
Model	"A" Dimension	"B" Dimension	"C" Dimension
DX2KM FHD 17"	From 120 [4,72] to 135 [5,32]	From 270 [10,63] to 320 [12,59]	From 10 [0,39] to 25 [0,98]



Mouse dimension.			
Model	"MA" Dimension	"MB" Dimension	"MC" Dimension
DX2KM FHD 17"	From 105 [4,13] to 120 [4,72]	From 58 [2,28] to 65 [2,56]	From 17 [0,67] to 42 [1,65]