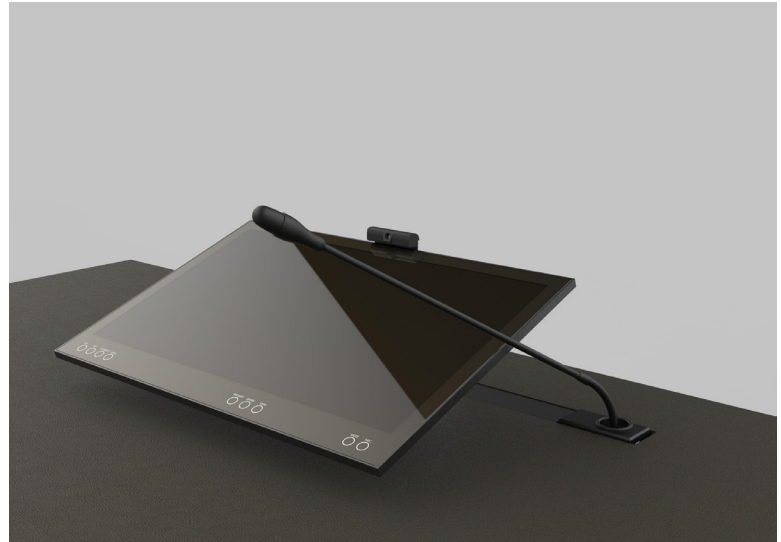
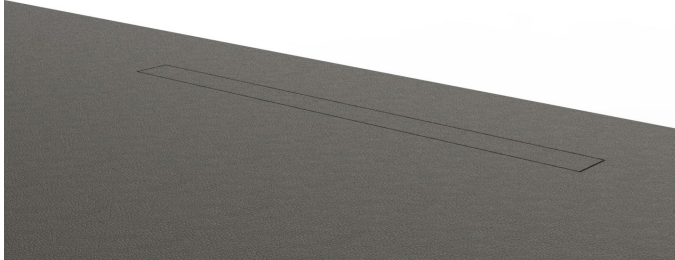


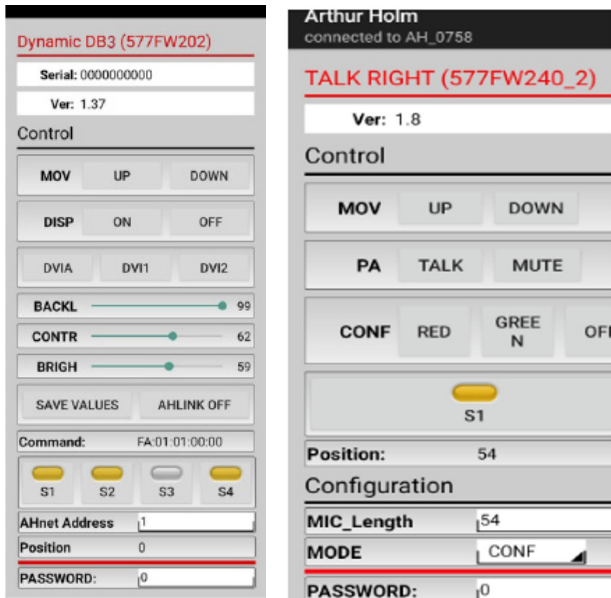
DB3Talk

HDCP compliant aluminum motorized monitor



Highlights

- Vertical motorized monitor with an independent microphone lift
- Adjustable monitor angle from 90° to 20°
- Stepless memorisable monitor angle
- 6mm edge and total thickness of 16 mm
- Automated hatch in black finishing or for table surface matching (veneer)
- Milled black anodized aluminium housing
- Dual side anti-reflective 2 mm. black-edged glass
- Energy saving design, low consumption video controller
- HDCP compliant DVI inputs
- RS422/RS485 Full Duplex I/O
- ISD: Interactive Setup Display for adjustments and setup
- AHlink: Wireless connectivity for setup, adjustments, and control
- AH-AMMC: Auto mechanical Movement Calibration



AHlink : the App for setup, control and diagnose



General

Professional 17.3" motorized monitor that includes an independent lift for gooseneck microphones. The motorized video display and microphone lift have a minimal impact on the table's design when retracted and an astonishing impact on the table when ejected. The unique design of the automated hatch allows it to be matched to the table surface by adding (optionally) the same material as the tabletop on top of it, providing a streamlined finish to the furniture.

The user can adjust the screen position for comfort and visibility, with full view of the other participants around the table. The screen inclines smoothly towards the user, who can adjust the monitor's position by simply touching a capacitive button located on the glass of the screen, stop the movement and lock the position at the desired angle. A memory function will allow to store an recall the desired position.

The materials selected for crafting this innovative, retractable monitor are sustainable, comprising aluminium and glass. The 17.3" LCD 4K professional display panel ensures a long lifespan.

The integrated independent lift system for microphones provides a smooth movement, which includes an automated turning system of the microphone and a plastic rounded ring to centre the microphone during its rise and retract movement from a

position hidden to a top position projected through the guide, preventing the microphone from scratching the monitor housing and surrounding parts, damaging or blocking it when retracting. This system provides two different working modes: PA and Conference. When in PA mode, a push button placed on the glass allows to activation or deactivation of the microphone. The system will automatically silence the microphone when retracting. The in-house designed electronics prioritize energy efficiency, while the AHlink app facilitates a comfortable and intuitive adjustment during integration and throughout the monitor's lifespan.

The retractable monitor is equipped with 2 x HDMI HDCP compliant inputs and an Interactive Setup Display for setup, control and diagnose. The monitor provides RS422/RS485 Full Duplex loop through (I/O) allowing the remote control of the input selection, movements, speeds, safety settings, brightness, contrast and backlight adjustments. It can also be adjusted and controlled via the wireless application: AHlink. The AHlink app is available for Android and iOS and gives access to the setup menu and information about the monitor, such as serial number and firmware version, without access to the monitor in the table. The Auto Mechanical Movement Calibration will automatically adjust the speed and the safety protection parameters.

Technical Specifications

Display

Size	4K 17.3" TFT Active Matrix, widescreen format. LED backlight
Resolution	3840 (h) x 2160 (v)
Brightness	614 cd/m2
Contrast ratio	1200:1
Pixel	0.03315 (h) x 0.03315 (v) mm
Viewing angle	85°/85°(l/r) 85°/85°(u/d)
Viewing area	381.888 (h) x 214.812 (v) mm
Response time	Tr + Tf 25ms
Temperature (operating/storage)	Operating 0°C ~+40°C Storage -20°C ~+60°C

Materials

Monitor housing	Solid mechanized aluminum housing with black anodized finish. Front black serigraphed glass
-----------------	---

Connectivity

Input signal	HDMI (2 input) – HDCP compliant
RJ45 CAT6 (I/O)	Addressable RS-422/RS-485 Full Duplex control by AHnet protocol
GPI (SubD9)	Up/Down control (opto isolated)
USB	For service (firmware upgrades)

Control

DynamicTalk Control	
GPI contact closer	
RS-422 (RJ45 CAT 6)	
Microphone control Button on glass	
Customized function Buttons on glass	
Movement's Control	
User interface on monitor	(Up/Down) Capacitive Touch Sensor
Remote	RS-422 /RS-485 Full Duplex (RJ45 CAT 6)

AHlink

Electrical

External power supply	100-240 Vac, 47/63Hz, 12Vdc
Power consumption	50W

Accessories

ERT-30 / ERT-60	Ethernet Interface Unit
-----------------	-------------------------

Mechanical

Monitor Dimensions:

Screen	414 x 292 x 36 mm [16.30" x 11.49" x 1.42"]
Top frame	520 x 47 mm [20.47" x 1.85"]
Housing below the table	588 x 601 x 145.50 mm [23.15" x 23.66" x 5.73"]
Weight	23.4 Kg / 51.59 Lbs

ARTHUR HOLM

Albiral Display Solutions SL · Fàtima, 25 · 08512 Sant Hipòlit de Voltregà · Barcelona, Spain · +34 938 502 376 · marketing@arthurholm.com · www.arthurholm.com
Arthur Holm is a registered brand of Albiral Display Solutions SL. Specifications subject to change without previous notice.

Make Your Meetings Count!

Options and accessories

- DynamicLoop
- DynamicShare
- Motorized USB camera
- Projected capacitive multi-touch screen
- Integrated USB-C retractable cable
- Automated hatch ready for veneering with capacitive sensor

Consultants, architects and engineers specifications

Vertically motorized 17.3" 4K professional monitor with an inclination from 90 to 20 degrees on the table surface including a universal microphone lift system.

The monitor housing shall be made of milled anodized aluminum with a 16 mm thickness and the screen shall be protected with an anti-reflecting 2 side coating black edged 2 mm glass.

The automated hatch shall slide down inside the mechanism and shall close the table cut off flush on the table.

A capacitive button shall be placed on the automated hatch to activate the monitor's movement. The movements of the monitor shall be controlled by 2 buttons located on the monitor's front glass; the user shall memorize the monitor's position, by pressing both movement control buttons simultaneously. Optionally, an Input Source Selection shall be located on the monitor's front glass to switch between the different signal inputs.

The monitor shall have a brightness of 614 cd/m², and a contrast ratio of 1200:1.

The system shall include an independent lift system for 3 pin XLR gooseneck microphones beside the monitor within the same mechanical housing. Both the monitor and the microphone's lift operate with only one external power supply. The microphone lift must have 3 operation buttons; open/close, mute/unmute the microphone and free GPO button.

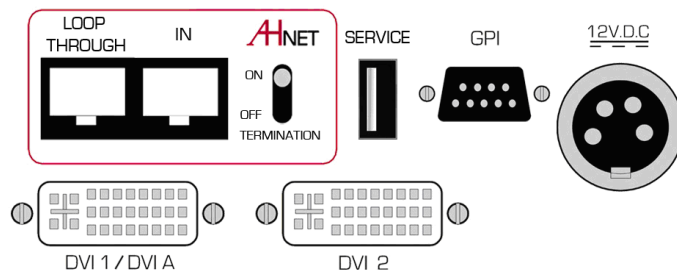
The lift system shall include an automated turning system of the microphone and a plastic rounded ring to centre the microphone during its rise and retract movement from a position hidden to a top position projected through the guide, preventing the microphone from scratching the monitor housing and surrounding parts, damaging or blocking when retracting.

The system shall be equipped with RS-422/RS-485 Full Duplex, RJ-45 and AHnet open protocol allowing individual remote control, setup and diagnostic of up to 30 units per line. GPI (contact close to control movements), GPO (contact close to detect button activation) and a USB for firmware updates.

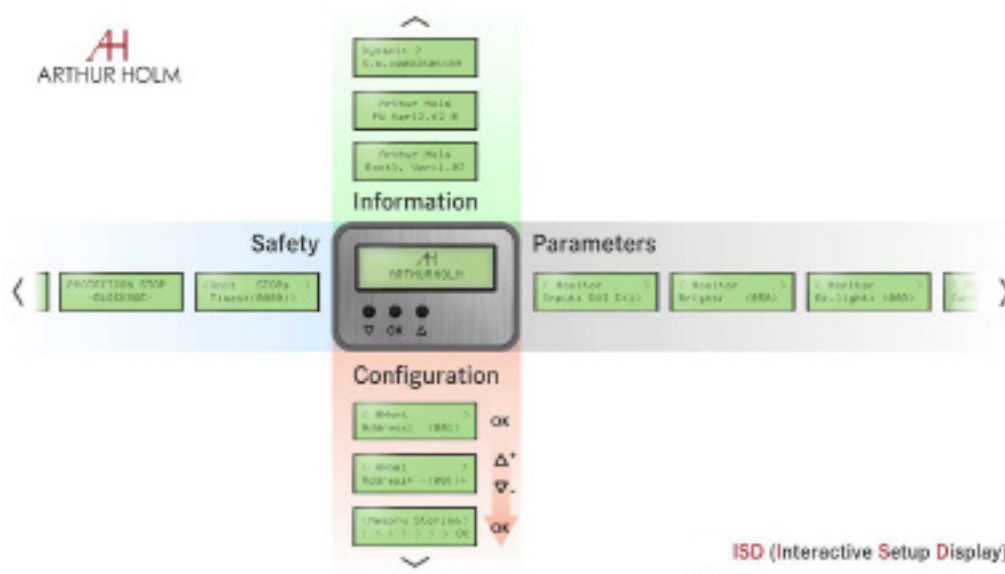
The unit shall provide a safety system that detects obstructions and causes the unit to stop with an audio indication. The unit shall provide an auto-calibration mode to reset mechanical speeds and safety adjustments. The system shall provide an automatic RS-422/RS-485 Full Duplex addressing system when used in combination with ERT-30 and ERT-60.

The unit shall be compatible with a wireless app that allows the exact adjustment of the microphone length, facilitates the unit's serial number, allows the activation and de-activation of the RS-422/RS-485 Full Duplex termination and allows to change the working mode from PA to Conference.

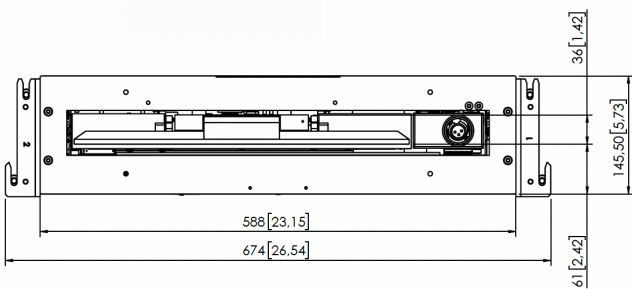
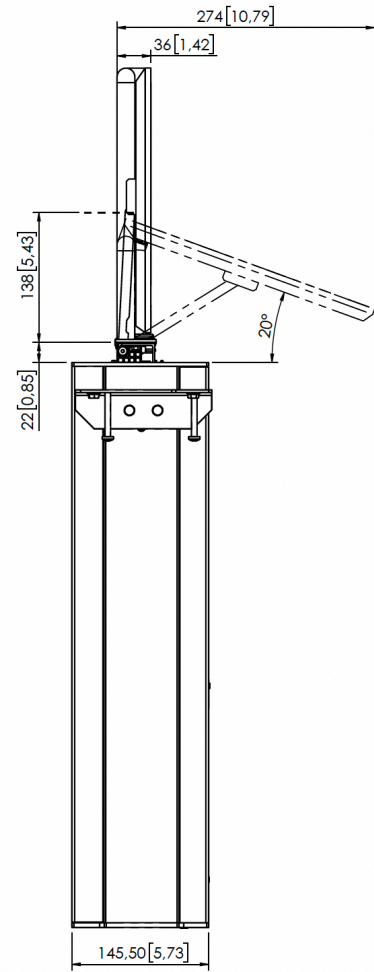
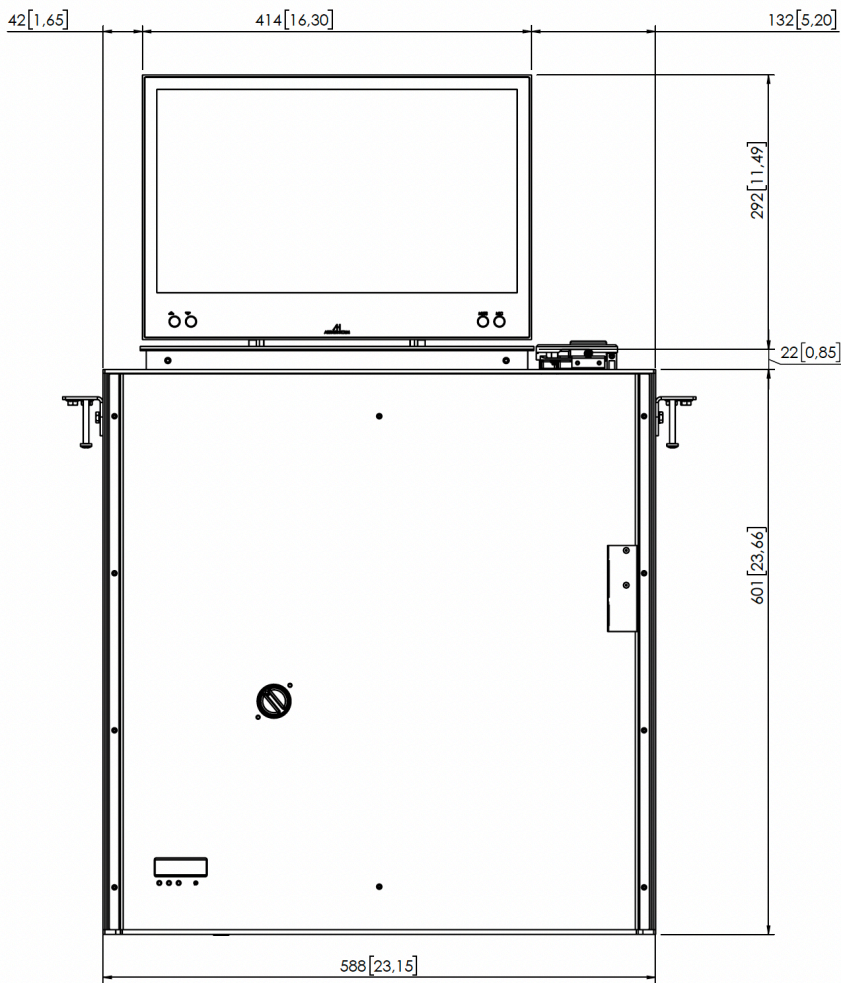
The monitor shall provide 2 HDMI HDCP inputs by a licensed HDCP manufacturer. The monitor shall be compatible with the AHlink wireless Android and iOS App for the setup, diagnosis and control.



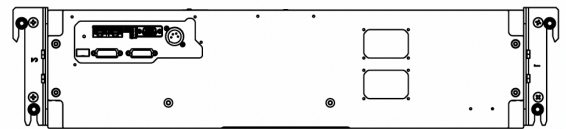
Interactive Setup Display (ISD)



General Dimensions



VIEW E



ARTHUR HOLM

Albiral Display Solutions SL · Fàtima, 25 · 08512 Sant Hipòlit de Voltregà · Barcelona, Spain · +34 938 502 376 · marketing@arthurholm.com · www.arthurholm.com
 Arthur Holm is a registered brand of Albiral Display Solutions SL. Specifications subject to change without previous notice.

Make Your Meetings Count!